

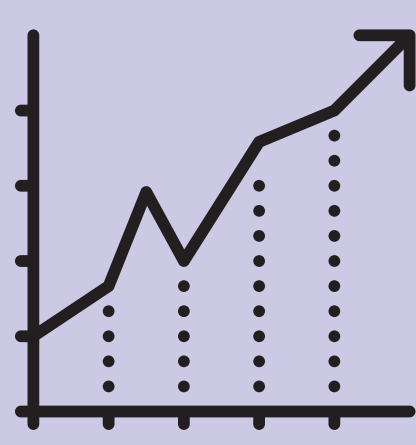
DigitalHub

An institutional repository for the research and scholarly output of Northwestern Medicine

What can you upload to DigitalHub?



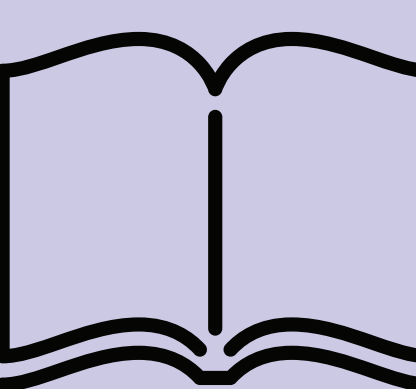
research papers
case reports
technical reports



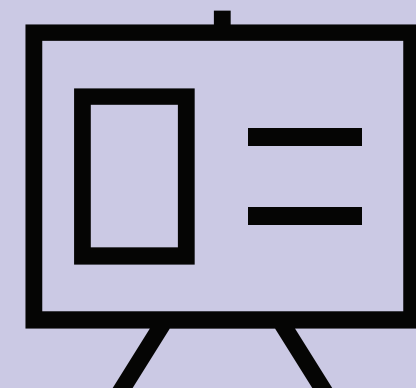
figures
images
guidelines



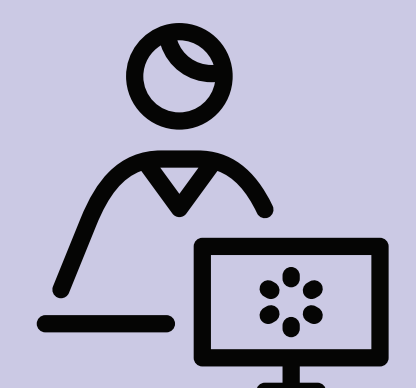
datasets
summary statistics



books
newsletters
user guides



conference papers
abstracts
presentations



educational materials
workshop resources
and so much more...

Visit DigitalHub at:

digitalhub.northwestern.edu

Who uses DigitalHub?

researchers
students
departments
centers
institutes

What can you do with DigitalHub?

Open up your scholarship to the greater community

Create collections to organize your scholarship

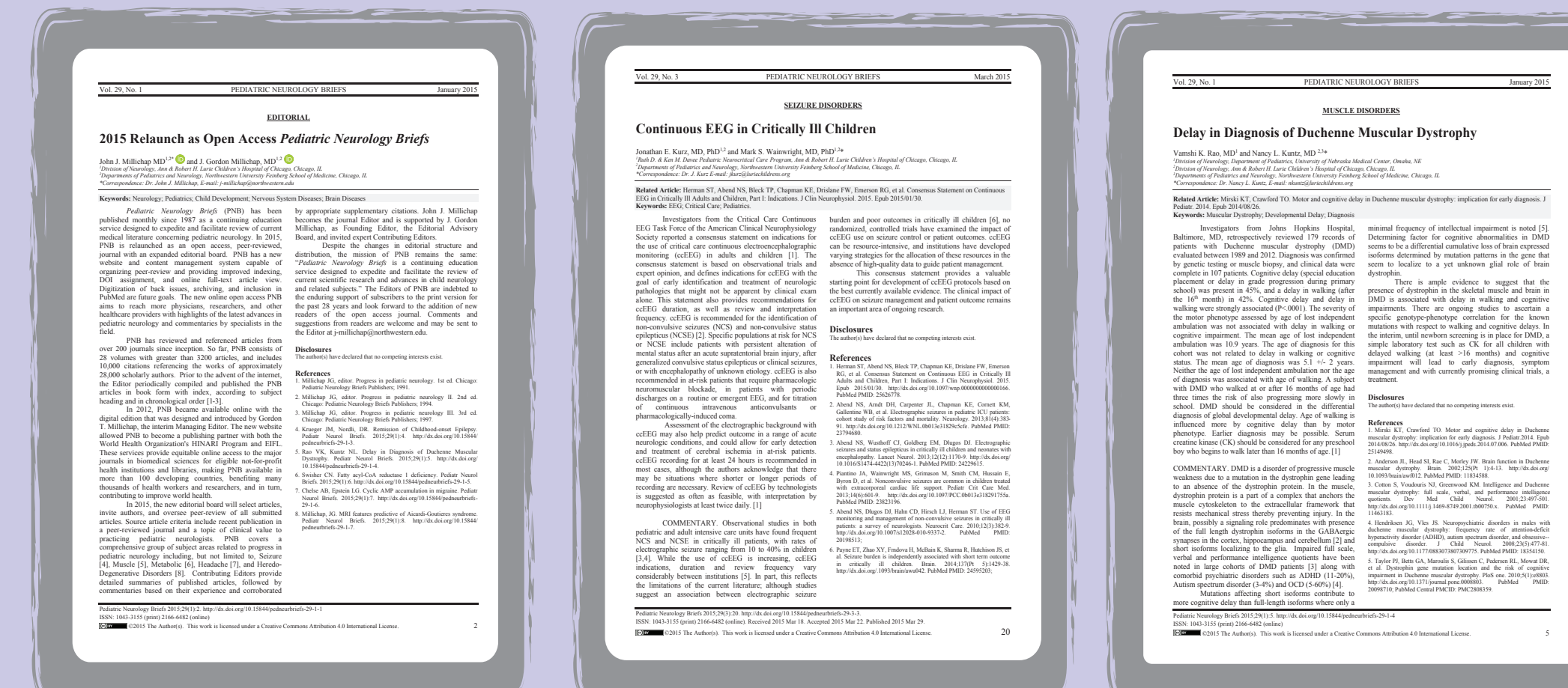
Track the use of your scholarship over time

Store your scholarship for the long term

Maximize visibility of your scholarship

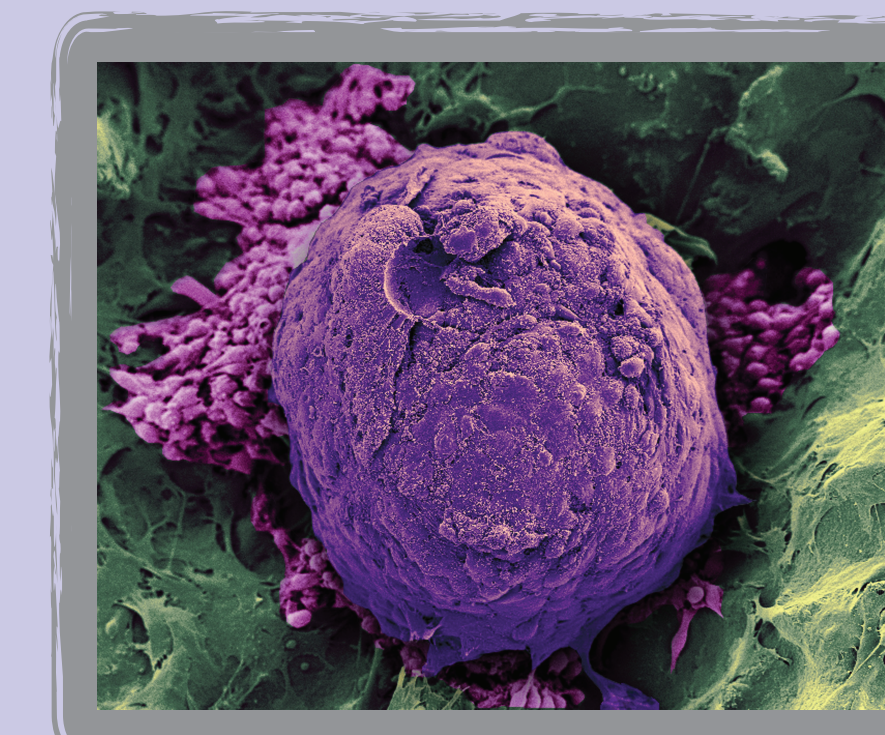
View Interesting Collections

Pediatric Neurology Briefs



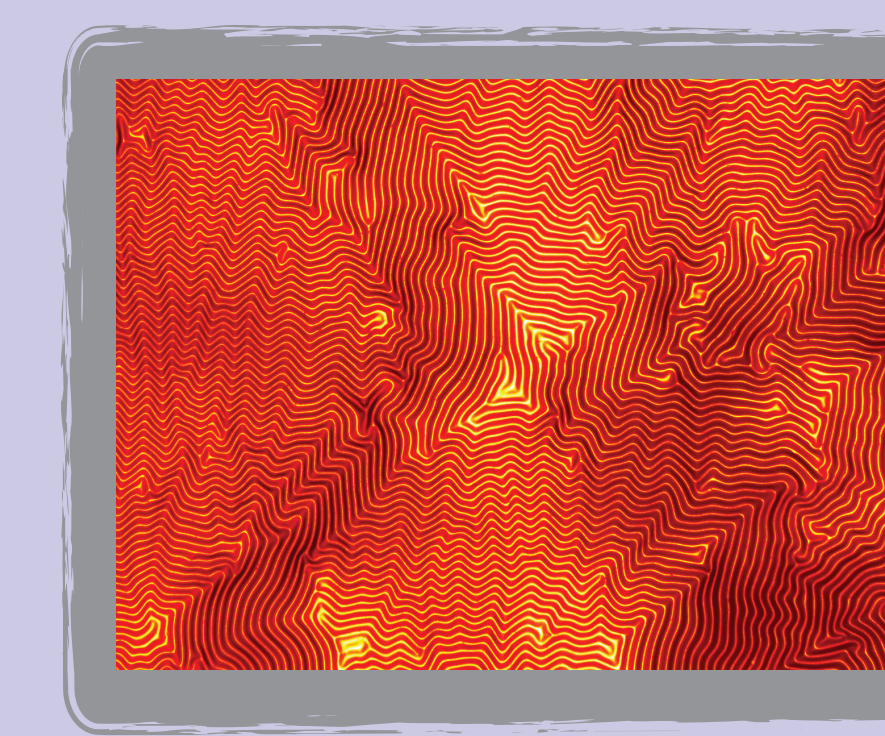
In 2016 DigitalHub became the open access home for Pediatric Neurology Briefs.

Northwestern Scientific Images Contest by Science in Society, 2015



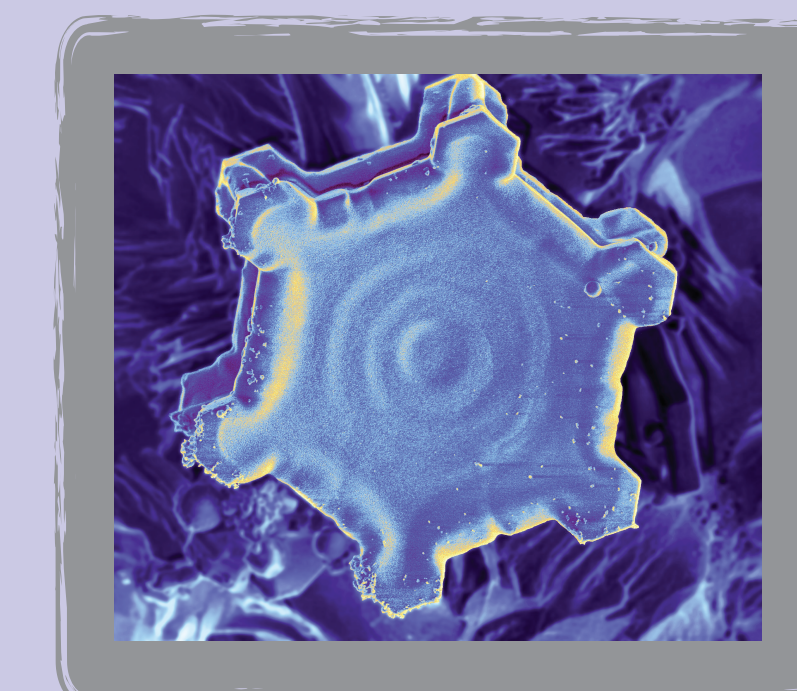
Supporting Potential Life

Monica Laronda and Adam Jakus, a reproductive biologist and a materials scientist and engineer, teamed up to help cancer survivors who struggle to conceive children. The image centers on a mouse ovarian follicle (in purple). An ovarian follicle is made up of a developing egg and its surrounding support cells. Normally follicles develop within healthy ovaries, but they can be damaged by harsh cancer therapies. [First Place, 2015]



Chaos to Order

This image by James Hedrick shows two materials sandwiched together. The bottom layer is a rubbery gel; it expands when heated and shrinks when cooled. The top layer is incredibly thin glass. Materials scientists heat the gel to extremely hot temperatures (332 degrees Fahrenheit) and then create a thin layer of glass on the surface. As the gel shrinks it pulls the glass sheet into a wrinkly pattern. The glass ridges ripple in yellow; the darker spots are the valleys in between. This sandwiching process was invented at Northwestern University to develop new, microscopic instruments and tools. [Second Place, 2015]



Special Snowflake

This image is by Michael Whittaker. Scientists can press pause on cells in action by rapidly freezing them. The cells must be frozen incredibly quickly -- within the blink of an eye. If the freezing process is too slow, the water inside (which makes up most of the cell) forms ice crystals. This microscopic image shows the very early stages of one such snowflake growing. If left to grow each of the six, symmetrical points would continue to branch out, developing into an intricate snowflake visible to the naked eye. [Third Place, 2015]

In the Spotlight



StatTag [software description]

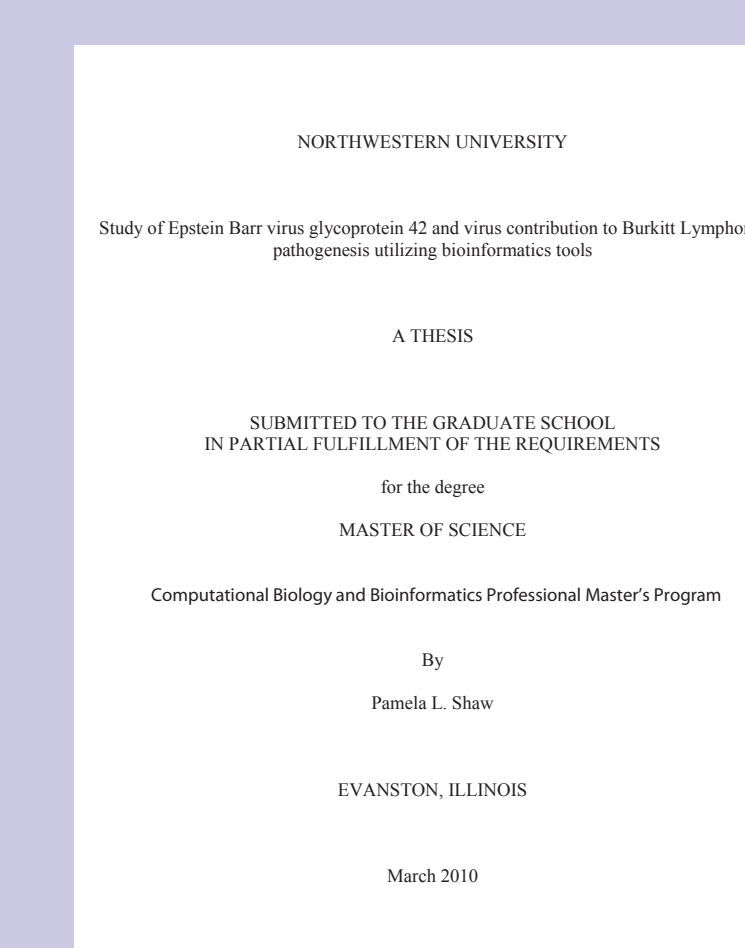
To more widely disseminate their statistical software package, Leah Wely, Luke Rasmussen and Abigail Baldrige decided to upload a description of their software to DigitalHub. Users who view the description are given a direct link to the software.

Data from studies on the epidemiology of coffee [summary statistics]

To make her data open to other researchers, Marilyn Cornelis uploaded several data files to DigitalHub.

Statistical considerations in basic science sex inclusive research [guideline]

To make her research more openly available, Denise Scholtens and Leah Wely uploaded their guidelines for sex inclusive research to DigitalHub. This openly available information is valuable to furthering inclusive research.



Study of Epstein Barr virus glycoprotein 42 and virus contribution to Burkitt Lymphoma pathogenesis utilizing bioinformatics tools [masters thesis]

To preserve her scholarship for the long term and make it more accessible, Pamela Shaw uploaded a copy of her Northwestern University masters thesis to DigitalHub.

Did you know?

Outputs in DigitalHub appear in Google search results.