

Navigating the Digital Scholar Sphere

Illinois Board of Higher Education (IBHE) - Faculty Advisory Council

January 15, 2016
Chicago, IL

Violeta Ilik
Galter Health Sciences Library, Feinberg
School of Medicine, Northwestern
University

Overview

- Current digital scholarly landscape

Identity Hubs

Digital repositories

Data repositories

National research portals

Researcher profile systems ...

- Author rights

- Open Access

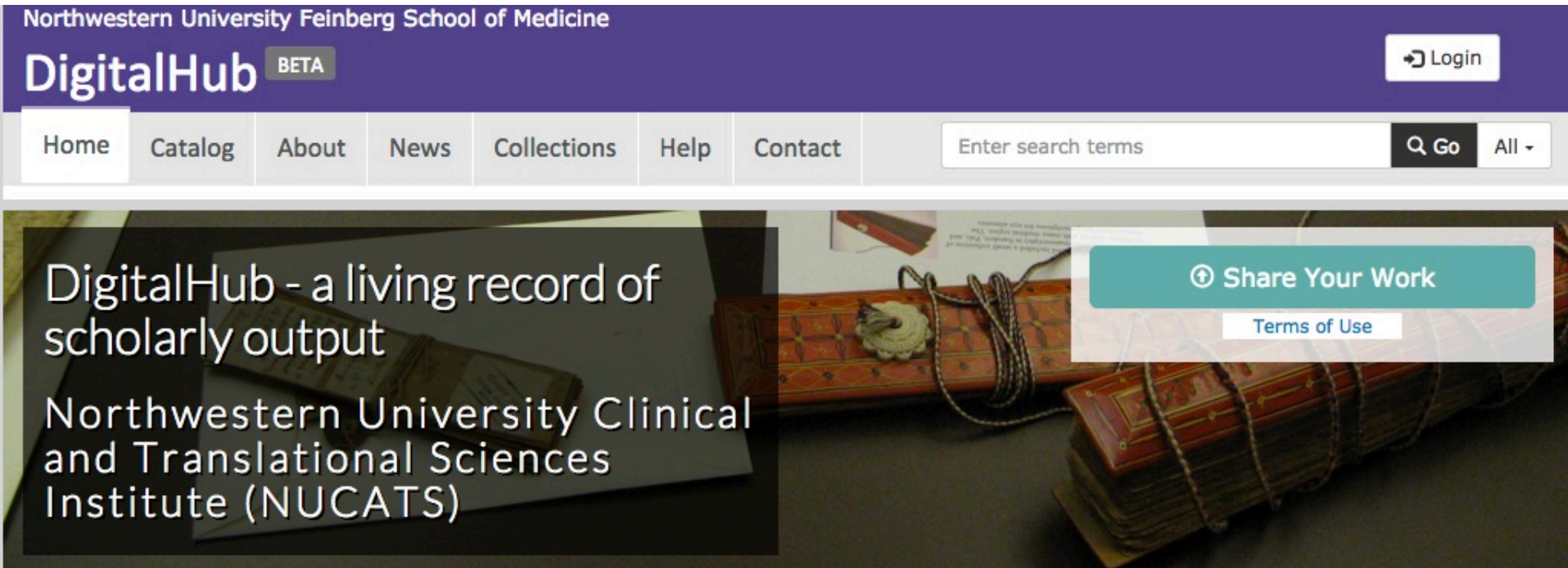
- Persistent Digital Identifier

- Research impact

Digital Landscape



Digital repositories: Northwestern Medicine's DigitalHub



DigitalHub facilitates the discovery and recognition of research and scholarship at Northwestern Medicine by bringing together, in one place, open access to research, both traditional and non-traditional, and information on scholarly activities across all disciplines. Populated with institutional and public data sources, DigitalHub represents a living record of scholarly output.

Why use Digital repositories?

- **easily share your research**
- **deposit your traditional and non-traditional scholarly outputs**
- **track views and downloads of your research**
- **make your research more discoverable to the global research community**

What scholarly outputs can be deposited in DigitalHub?

- Research papers, published or unpublished
- Conference papers, presentations, and lectures
- Educational materials
- Case reports, technical reports, and white papers
- Supplemental images
- Posters
- Open access books
- Images
- ...and more!

Author rights

- **SPARC** – “the Scholarly Publishing and Academic Resources Coalition works to enable the open sharing of research outputs and educational materials in order to democratize access to knowledge, accelerate discovery, and increase the return on our investment in research and education.”

http://www.sparc.arl.org/sites/default/files/Access-Reuse_Addendum.pdf



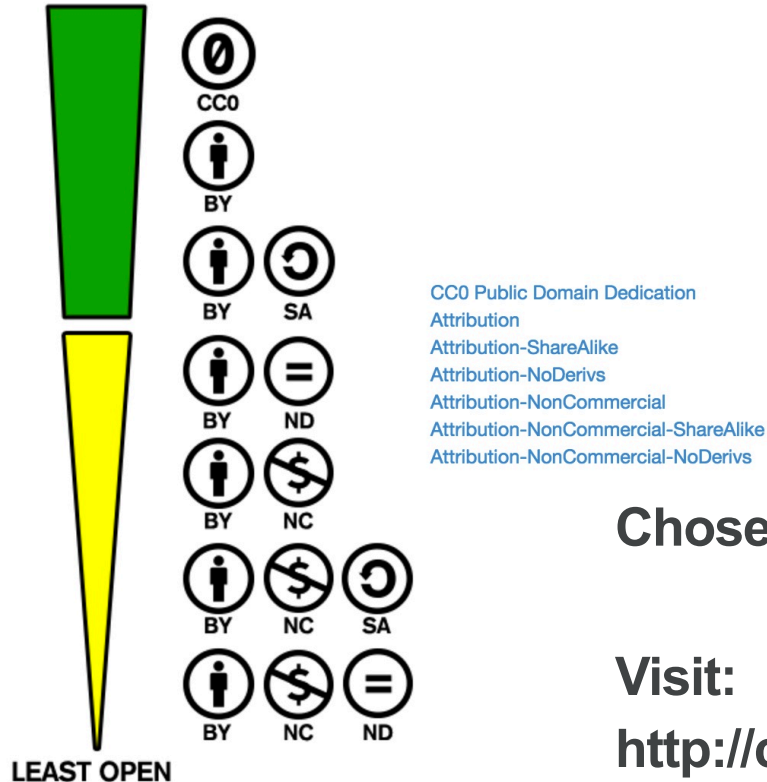
- **Creative Commons helps you share your knowledge and creativity with the world.**

“CC is helping to realize the full potential of the Internet—universal access to research and education, full participation in culture—to drive a new era of development growth, and productivity.” <http://creativecommons.org/>



Creative Commons License

MOST OPEN



CC0 Public Domain Dedication
Attribution
Attribution-ShareAlike
Attribution-NoDerivs
Attribution-NonCommercial
Attribution-NonCommercial-ShareAlike
Attribution-NonCommercial-NoDerivs

Chose your best option!

Visit:

<http://creativecommons.org/examples#by>

Creative Commons License

Which Creative Commons licence is right for me?

Instructions

Creative Commons (CC) is a non-profit organisation that works to make it easier to share, reuse, repurpose and remix creative material. It does this by providing free licences that let creators give permission in advance for certain uses of their material.

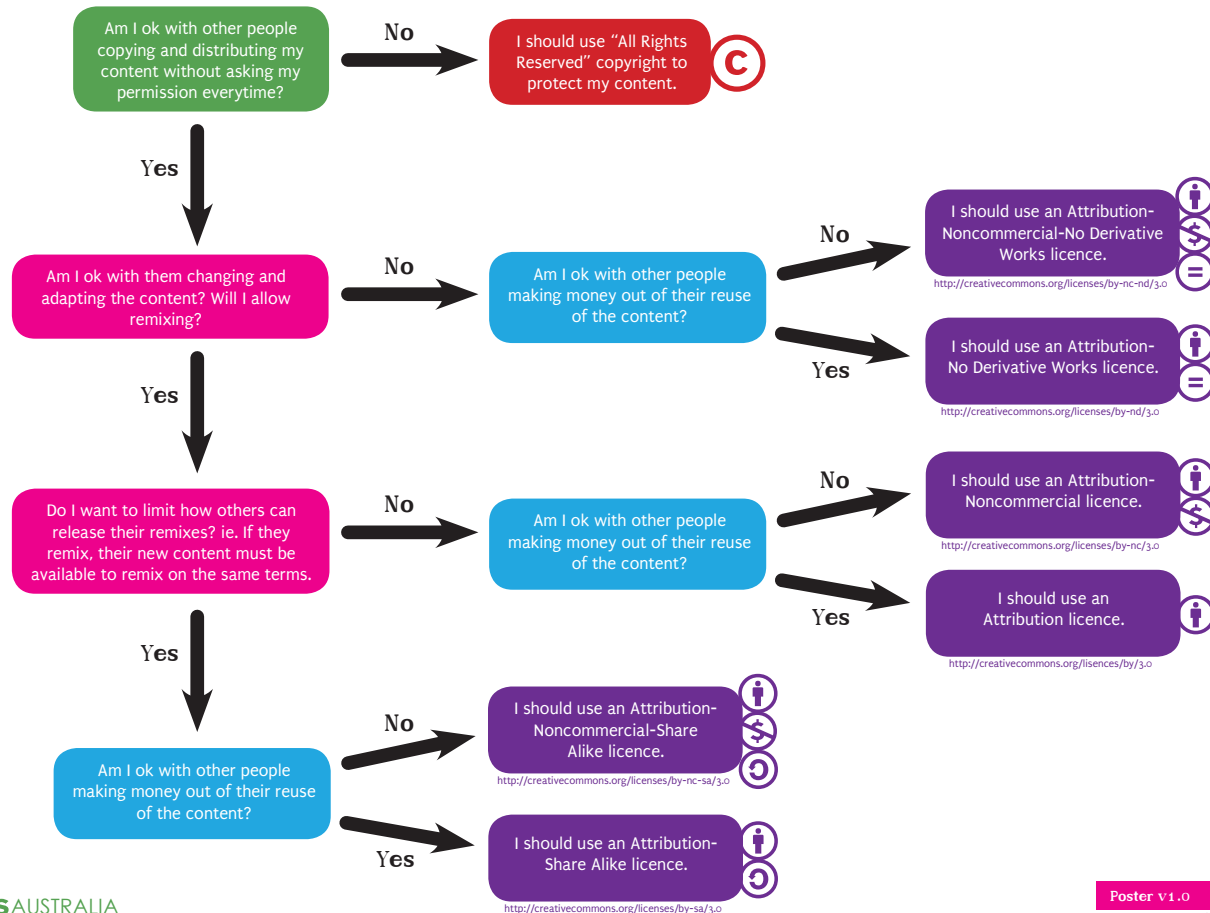
CC encourages people to share their work. But we think it is very important that you use the right licence for you, and that you understand what that licence means. This flowchart is intended to help with this—by answering a few simple questions, it lets you choose which CC licence is right for you, or if you want to use a CC licence at all.

Start at the **green question box** and, following the arrows that correspond with your answer, make your way through the **pink remixing** and **blue commercial** questions until you reach a **purple licence box**. That will be the right licence for you. For the full details of each of the licences, see the **link** under the box.

CC has an online tool that will take you through the similar process at <http://creativecommons.org/choose>.

For more information about the CC licences, see <http://creativecommons.org/licenses>.

Start here!



Checking publisher copyright policies & self-archiving



Publisher copyright policies & self-archiving

Search

☒ Journal titles or ISSNs ☐ Publisher names

☒ Exact title ☐ starts with ☐ contains ☐ ISSN

[Advanced Search](#)

Use this site to find a summary of permissions that are normally given as part of each publisher's copyright transfer agreement.

First stop: SHERPA/RoMEO <http://www.sherpa.ac.uk/romeo/>
Not sure? Contact your publisher

Using SHERPA/RoMEO

Example of a Journal that doesn't allow archiving of the final published version

One journal found when searched for: 0969-9961

Journal: Neurobiology of Disease (ISSN: 0969-9961)	
RoMEO: This is a RoMEO green journal	
Paid OA: A paid open access option is available for this journal	
Author's Pre-print:	✓ author can archive pre-print (ie pre-refereeing)
Author's Post-print:	✓ author can archive post-print (ie final draft post-refereeing)
Publisher's Version/PDF:	✗ author cannot archive publisher's version/PDF
General Conditions:	<ul style="list-style-type: none"> Authors pre-print on any website, including arXiv and RePEC Author's post-print on author's personal website immediately Author's post-print on open access repository after an embargo period of between 12 and 24 months Permitted deposit due to Funding Body, Institutional and Governmental policy or mandate Author's post-print may be used to update arXiv and RePEC Publisher's version/PDF cannot be used Must link to publisher version with DOI Author's post-print must be released with a Creative Commons Attribution Non-Commercial License
Mandated OA: (Awaiting information)	
Paid Open Access: Open Access	
Notes:	<ul style="list-style-type: none"> Publisher last reviewed on 03/06/2015
Copyright: Unleashing the power of academic sharing - Sharing Policy - Sharing and Hosting Policy FAQ - Green open access - Journal Embargo Period List (pdf) - Journal Embargo List for UK Authors , Attaching a User License (pdf) - Funding Body Agreements	
Updated: 01-May-2015 - Suggest an update for this record	
Link to this page: http://www.sherpa.ac.uk/romeo/issn/0969-9961/	
Published by: Elsevier [Commercial Publisher] - Green Policies in RoMEO	
For: Academic Press [Imprint] - Suggest to RoMEO	
Guidance: Please see the list of Publisher Categories in RoMEO for guidance on interpreting the priority of multiple publishers.	

These summaries are for the journal's *default* policies, and changes or exceptions can often be negotiated by authors.
All information is correct to the best of our knowledge but should not be relied upon for legal advice.

Open Access

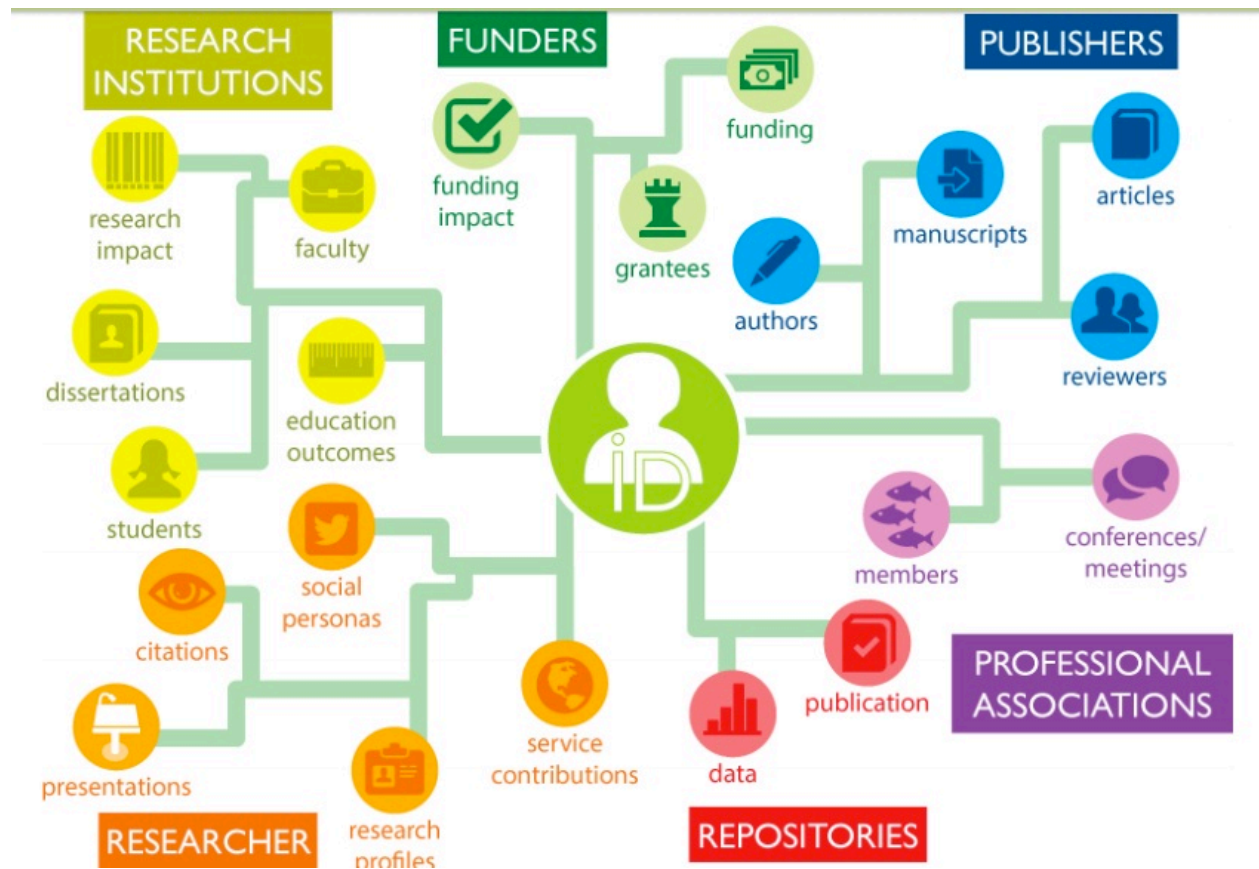
- Open access (OA) publications are:
 - free to access
- OA publications in general:
 - receive **higher visibility**
 - generate **more citations**
 - allow authors to **retain copyrights**
- **Resources:**
 - Directory of Open Access Journals (DOAJ) <http://www.doaj.org/>
 - Potential, possible, or probable **predatory scholarly open-access publishers** <http://scholarlyoa.com/publishers/>

Persistent Digital Identifiers - ORCID iD

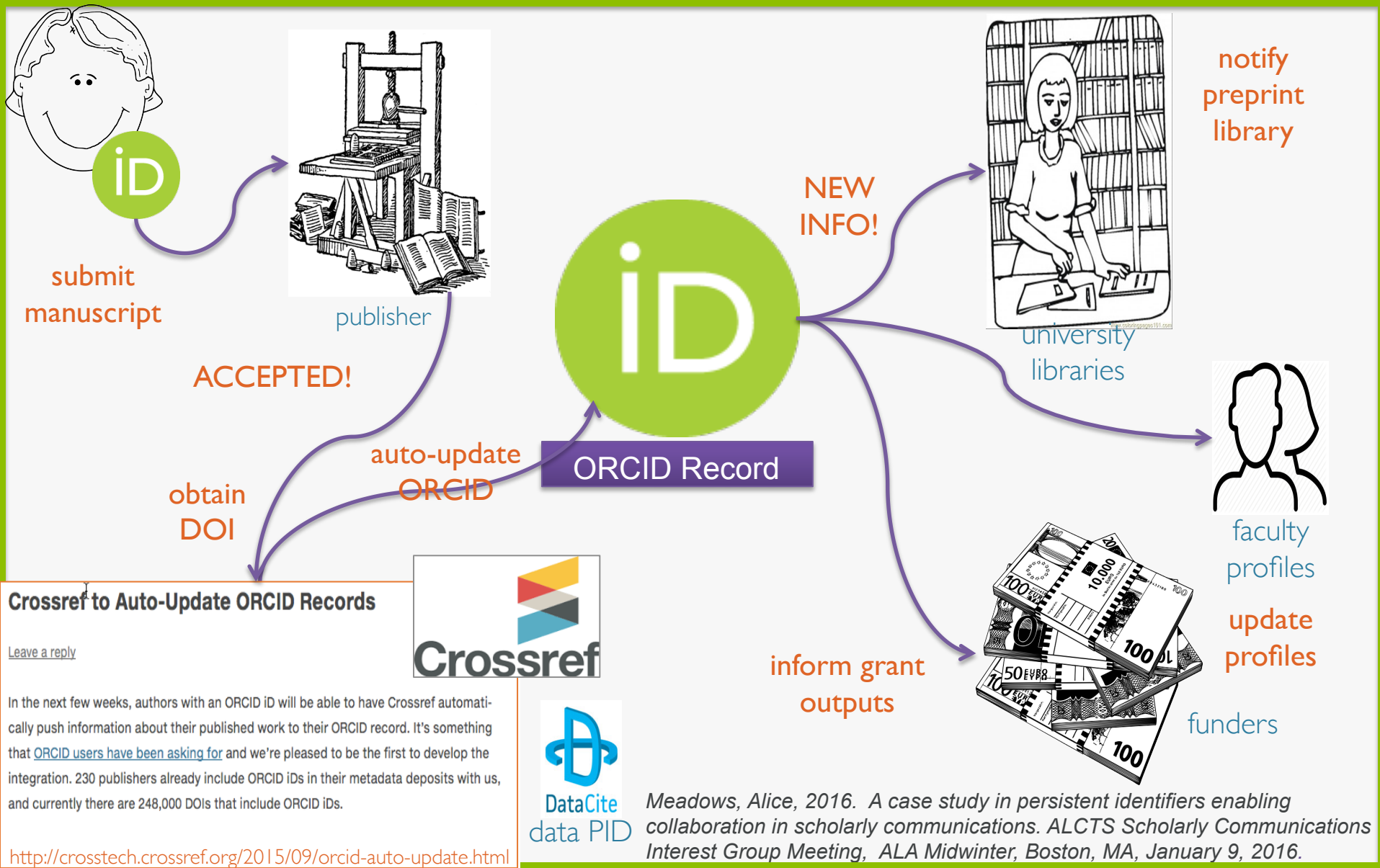


- unique, persistent person identifier
- free to researchers, scholars & analysts
- used throughout one's career
- all professional activities, affiliations, disciplines,
- nations & languages
- embedded into workflows & metadata

ORCID iD links information



Auto-update data flow: publishing



Crossref to Auto-Update ORCID Records

[Leave a reply](#)

In the next few weeks, authors with an ORCID iD will be able to have Crossref automatically push information about their published work to their ORCID record. It's something that [ORCID users have been asking for](#) and we're pleased to be the first to develop the integration. 230 publishers already include ORCID iDs in their metadata deposits with us, and currently there are 248,000 DOIs that include ORCID iDs.

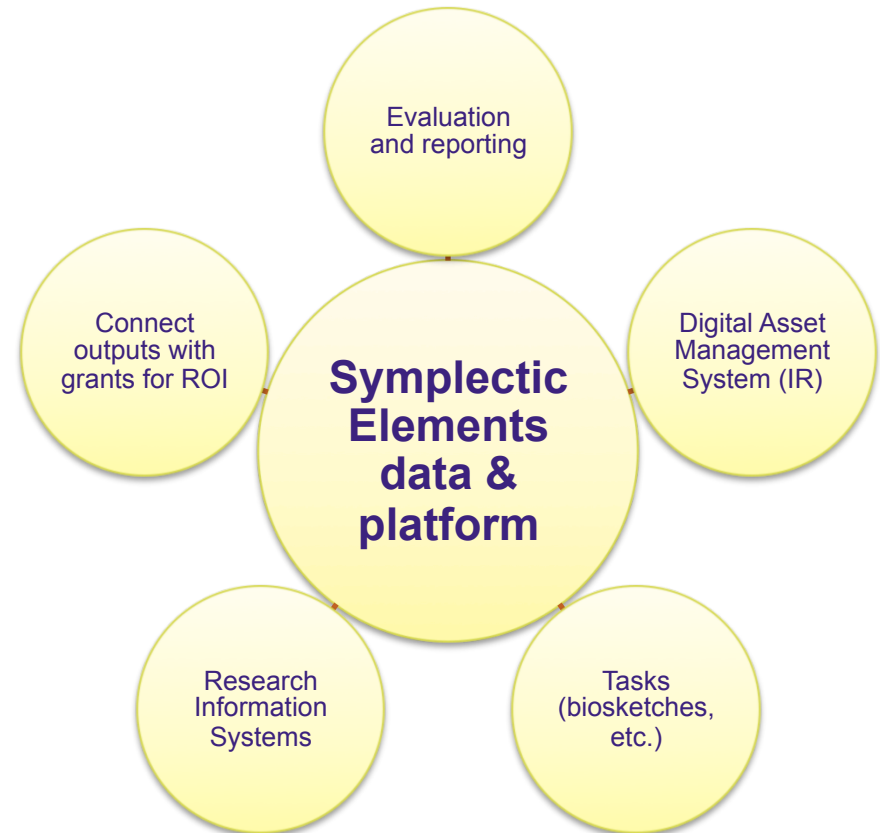
<http://crosstech.crossref.org/2015/09/orcid-auto-update.html>



Meadows, Alice, 2016. A case study in persistent identifiers enabling collaboration in scholarly communications. ALCTS Scholarly Communications Interest Group Meeting, ALA Midwinter, Boston, MA, January 9, 2016.

Northwestern Medicine project for tracking research impact: Symplectic elements

	Metadata
Altmetric	-
arXiv	✓
CiNii	✓
CrossRef*	✓
dblp	✓
Europe-PMC	✓
figshare	✓
Google Books	✓
PubMed	✓
RePEc	✓
Scopus*	✓
Web of Science*	✓



Holmes, K. 2015. *Linked Data Love: research representation, discovery, and assessment*. ALCTS/LITA Linked Library Data Interest Group. American Library Association Annual Meeting, San Francisco June 27, 2015

Digital Landscape





Discussion

Thank you
Violeta Ilik

violeta.ilik@northwestern.edu